



## Product Catalog - March 2010

### **fatCot** PRECISION RACKING SOLUTIONS



### **fatCot** CABLES



### **fatCot** DISTANCE **HD**



## Top Panel

Standard no-fan, 2-fan, or 4-fan

Unique contoured design provides a custom look unmatched in the industry

Front-post door attachment enables easy removing of the door for servicing equipment

- Use Stealth Series when a custom look is needed, along with superior strength to support serious installations
- Heavy-duty design supports up to 1500 lbs.
- 20U - 44U contoured corner front and rear posts with numbered spaces
- Designed to stand alone, rest on casters, or slide out from the wall
- Ships knockdown for easy delivery and assembly

Rear posts feature spring-metal cable management clips for easy securing of power and cable bundles

U-Shaped support frames fortify the bottom panel, facilitating off-site integration and transport of the rack to the installation site

18" or 24" Deep

23" Wide

## Side Supports

Included side supports strengthen front and rear railings and eliminate wobbling

Updated quick-release door design allows for fast access to equipment, ability to swing door from right or left, and increased spacing between the door and the equipment

Frame includes front and rear contoured extrusion posts, top and bottom panels, and side supports.

## RSS-FRM

Shown with Side Panels and Plexiglas Door

Frame Part Number*	Racking Height	Overall Height	Overall Depth	Overall Width	Weight Capacity
RSS-FRM-20U18	20U (35")	41"	18"	23"	1500 lbs.
RSS-FRM-20U24	20U (35")	41"	24"	23"	1500 lbs.
RSS-FRM-28U18	28U (49")	55"	18"	23"	1500 lbs.
RSS-FRM-28U24	28U (49")	55"	24"	23"	1500 lbs.
RSS-FRM-36U24	36U (63")	69"	24"	23"	1500 lbs.
RSS-FRM-44U24	44U (77")	83"	24"	23"	1500 lbs.

\* For racks with two fans in the top panel, add a "-2F" to the end of the part number.  
For racks with four fans in the top panel, add a "-4F" to the end of the part number.

## Frame and Series-Specific Options

### Casters and Leveling Feet



#### R-CASTER

Set of 4 casters with 2" wheels, supports up to 450 lbs.



#### R-CASTER-F

Set of 4 soft-rubber casters for fine flooring, 2" wheels, supports up to 400 lbs.



#### R-LEVELFT

Set of 4 leveling feet, adjustable up to 1"



#### RSS-CASTERBASE

Skirted 11-gauge steel base with four heavy duty casters, supports 1500 lbs.



#### RSS-CASTERCVR

18-gauge steel cover to conceal casters on bottom of rack



#### RSS-SIDESUP-18 RSS-SIDESUP-24

Provides additional frame strength and stability

### Front Doors

Doors include cam key lock and tooled handle. They can be installed to swing to the right or left, and provide a 1 1/2" clearance from mounted equipment.

Perforated metal doors feature a unique contoured design for the perfect finish.



### Side Panels

Lockable side panels clip seamlessly into the rack frame and install without the use of any tools.

### Rear Panels

For those who like their rack completely enclosed for better control of air flow, Stealth Series rear panels include two sets of knockouts on the top and bottom to accommodate service cable entry.

Rack U Space	Front Doors		Side Panels		Rear Panels
	Perforated Metal	Plexiglas	18" Rack Frame Depth	24" Rack Frame Depth	23" Wide
20U	RSS-FDOORVML-20U	RSS-FDOORPL-20U	RSS-SP-20U18	RSS-SP-20U24	RSS-RP-20U
28U	RSS-FDOORVML-28U	RSS-FDOORPL-28U	RSS-SP-28U18	RSS-SP-28U24	RSS-RP-28U
36U	RSS-FDOORVML-36U	RSS-FDOORPL-36U	-	RSS-SP-36U24	RSS-RP-36U
44U	RSS-FDOORVML-44U	RSS-FDOORPL-44U	-	RSS-SP-44U24	RSS-RP-44U

## Slide-out System Options

### Heavy-duty Slide-out Systems

Part Number	Dim/Spaces	Qty
RSS-SLIDE(HD)-18	18" deep	1 unit
RSS-SLIDE(HD)-24	24" deep	1 unit

### Cable Management

#### Vertical Railings for Slide-out System

R-SLIDECM(HD)-20U	20U	2 rails
R-SLIDECM(HD)-28U	28U	2 rails
R-SLIDECM(HD)-36U	36U	2 rails
R-SLIDECM(HD)-44U	44U	2 rails

#### Horizontal Lacer Bars for Slide-out System

RSS-SLIDECM-LCR	n/a	Set of 4
-----------------	-----	----------



#### R-RACKJACK

Optional RackJack service stand now includes built-in casters

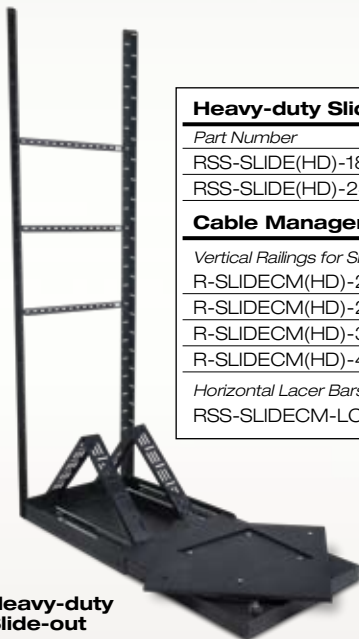
- Complete slide-out solution for easy access to rear cables and equipment
- New heavy-duty construction features multiple reinforcements to maximize base rigidity
- New push-pin design locks in the rack at 0, 60, and 90 degrees
- Now includes hinged "scissor arm" cable carriers for rear cable tie-down
- 450 lb. weight capacity with proper weight distribution
- Optional vertical cable management railings and horizontal lacer bars for rear support
- Bolts directly to Stealth Series rack bottom panel, enabling off-site integration of rack
- Includes removable front cover

### Accessories

R-RACKJACK	Standard RackJack, adjustable from 4"-10"
R-RACKJACK 7-13	RackJack with built-in casters, adjustable from 7"-13"
R-RACKJACK 13-27	RackJack with built-in casters, adjustable from 13"-27"
R-RACKJACK 19-43	RackJack with built-in casters, adjustable from 19"-43"

### Heavy-duty Slide-out

With rear cable management bars



# THIN LINE SERIES RACKS

**Top Panel**  
Standard no-fan  
or 2-fan options



**Trim Panels**  
Logoed, angle-slotted trim  
panels included

- Use the Thin Line when space is tight or multiple racks need to be ganged together
- Ultra-thin, only 19 1/8" wide (20 3/8" wide with side panels)
- Sturdy 13-gauge top and bottom panels provide strength and stability
- 11-gauge front and rear rack rails with numbered spaces (10-32 threaded)
- Includes front top and front bottom trim panels
- Ships knockdown for easy delivery and assembly

**Numbered Front and Rear Rails**

11-gauge rails provide extra strength and support

20" or  
26" Deep

**Side Supports**

Strengthen front and rear railings and eliminate wobbling

Side supports are included with 20U-44U rack frame models

Unique side panel frame adds rock-solid strength, while lockable, clip-on door design allows quick access to equipment

Side panel includes knockout for optional lock

19 1/8" Wide

Frame includes front and rear railings, top and bottom panels, logoed front trim panels, and side supports (20U-44U models).

**RTL-FRM**



Shown with Side Panels and Vented Metal Door

20" Depth <sup>1</sup> Part Number <sup>2</sup>	26" Depth <sup>1</sup> Part Number <sup>2</sup>	Racking Height	Overall Height <sup>3</sup>	Overall Width <sup>4</sup>	Weight Capacity <sup>5</sup>
RTL-FRM-08U20	RTL-FRM-08U26	8U (14")	18"	19 1/8"	400 lbs.
RTL-FRM-12U20	RTL-FRM-12U26	12U (21")	25"	19 1/8"	400 lbs.
RTL-FRM-16U20	RTL-FRM-16U26	16U (28")	32"	19 1/8"	400 lbs.
RTL-FRM-20U20	RTL-FRM-20U26	20U (35")	39"	19 1/8"	400 lbs.
RTL-FRM-28U20	RTL-FRM-28U26	28U (49")	53"	19 1/8"	400 lbs.
RTL-FRM-36U20	RTL-FRM-36U26	36U (63")	67"	19 1/8"	400 lbs.
RTL-FRM-44U20	RTL-FRM-44U26	44U (77")	81"	19 1/8"	400 lbs.

<sup>1</sup> Side panels add additional 1/2" depth to front and rear (1" total)  
<sup>2</sup> For racks with two fans in the top panel, add a "-2F" to the end of the part number  
<sup>3</sup> Front doors add an additional 4/5" to overall rack height  
<sup>4</sup> Each side panel adds 5/8" to overall width (20 3/8" total width with side panels)  
<sup>5</sup> Side panels add 100 lbs. weight capacity to rack frame (500 lbs. total capacity with side panels)

## Frame and Series-Specific Options

### Casters and Leveling Feet



#### R-CASTER

Set of 4 casters with 2" wheels, supports up to 450 lbs.



#### R-CASTER-F

Set of 4 soft-rubber casters for fine flooring, 2" wheels, supports up to 400 lbs.



#### R-LEVELFT

Set of 4 leveling feet, adjustable up to 1"

### Caster Cover



#### RTL-CASTERCVR

18-gauge steel cover to conceal casters on bottom of rack

### Side Supports



#### RTL-SIDESUP-20 RTL-SIDESUP-26

Provides additional frame strength and stability

### Front Doors and Side Panels

Doors include cam key lock and tooled handle. They can be installed to swing to the right or left, and provide a 1 1/2" clearance from mounted equipment. In order to lock, doors require either side panels (single rack installation) or a cable chase (multi-rack ganged installation).

Perforated metal doors feature a unique contoured design for the perfect finish.



Side panels ship with an easy-to-install 16-gauge frame that adds 100 lbs. additional weight capacity to the rack frame (500 lbs. total). The lockable side panels then clip seamlessly into the frame. Side panels add 1 1/4" to the overall frame width and 1" to the overall frame depth.

**Note:** In order to install a front door, side panels must also be used.



Rack U Space	Front Doors		Side Panels	
	Perforated Metal	Plexiglas	20" Rack Frame Depth	26" Rack Frame Depth
8U	RTL-FDOORVML-08U	RTL-FDOORPL-08U	RTL-SP-08U20	RTL-SP-08U26
12U	RTL-FDOORVML-12U	RTL-FDOORPL-12U	RTL-SP-12U20	RTL-SP-12U26
16U	RTL-FDOORVML-16U	RTL-FDOORPL-16U	RTL-SP-16U20	RTL-SP-16U26
20U	RTL-FDOORVML-20U	RTL-FDOORPL-20U	RTL-SP-20U20	RTL-SP-20U26
28U	RTL-FDOORVML-28U	RTL-FDOORPL-28U	RTL-SP-28U20	RTL-SP-28U26
36U	RTL-FDOORVML-36U	RTL-FDOORPL-36U	RTL-SP-36U20	RTL-SP-36U26
44U	RTL-FDOORVML-44U	RTL-FDOORPL-44U	RTL-SP-44U20	RTL-SP-44U26

### Cable Chase

18-gauge cable chase for ganging two racks together. Three-piece design allows for quick installation and provides 3" for cable management between racks.

Rack U Space	20" Deep	26" Deep
8U	RTL-CC-08U20	RTL-CC-08U26
12U	RTL-CC-12U20	RTL-CC-12U26
16U	RTL-CC-16U20	RTL-CC-16U26
20U	RTL-CC-20U20	RTL-CC-20U26
28U	RTL-CC-28U20	RTL-CC-28U26
36U	RTL-CC-36U20	RTL-CC-36U26
44U	RTL-CC-44U20	RTL-CC-44U26



Two frames ganged together with cable chase

## Slide-out System Options



**Lite-duty**

### Lite-duty Slide-out System

- Perfect for custom cabinetry and millwork installations
- Base unit is only 22" deep, 20" wide, and 3.5" tall
- Optional rear frame provides efficient cable management support
- Accommodates 20" deep Thin Line Series racks ranging from 8U-20U high
- Locks in at 0, 60, and 90 degrees
- Up to 250 lbs. weight capacity



### R-RACKJACK

Optional RackJack service stand now includes built-in casters



**Heavy-duty**

### Heavy-duty Slide-out System

- Complete slide-out solution for easy access to rear cables and equipment
- New heavy-duty construction features multiple reinforcements to maximize base rigidity
- New push-pin design locks in the rack at 0, 60, and 90 degrees
- Now includes hinged "scissor arm" cable carriers for rear cable tie-down
- 450 lb. weight capacity with proper weight distribution
- Optional vertical cable management railings and horizontal lacer bars for rear support
- Bolts directly to Stealth Series rack bottom panel, enabling off-site integration of rack
- Includes removable front cover

### Lite-duty Slide-out System

Part Number	Height
RTL-SLIDE(LD)-20	08U-20U

### Lite-duty Cable Management

#### Vertical Railings for Slide-out System

RTL-SLIDECM(LD)-08U
RTL-SLIDECM(LD)-12U
RTL-SLIDECM(LD)-16U
RTL-SLIDECM(LD)-20U

#### Horizontal Lacer Bars for Slide Out System

RTL-SLIDECM(LD)-LCR
---------------------

### Heavy-duty Slide-out System

Part Number	Height
RTL-SLIDE(HD)-20	20U-44U
RTL-SLIDE(HD)-26	20U-44U

### Heavy-duty Cable Management

#### Vertical Railings for Slide-out System

R-SLIDECM(HD)-20U
R-SLIDECM(HD)-28U
R-SLIDECM(HD)-36U
R-SLIDECM(HD)-44U

#### Horizontal Lacer Bars for Slide-out System

RTL-SLIDECM(HD)-LCR
---------------------

### Accessories

R-RACKJACK, R-RACKJACK 7-13,  
R-RACKJACK 13-27, R-RACKJACK 19-43

## WALL MOUNT SERIES RACKS



18" Deep



Unique six-hole mounting design for flexible installation

Sturdy 13-gauge top and bottom panels provide superior strength and stability



Shown with Side Panels and Vented Metal Door

- Use the Wall Mount Relay Rack for mounting telecom or A/V equipment when floor space is at a premium
- 20U (35") racking height to accommodate most installation environments
- 18" depth accommodates most rack-mountable equipment
- Double-plated rear mount surfaces allow solid mounting capacity of up to 200 lbs.
- Ultra-thin, only 19 1/8" wide (20 3/8" wide with side panels)
- 11-gauge rack rails with numbered spaces (10-32 threaded)
- Includes front top and front bottom trim panels
- Ships knockdown for easy delivery and assembly

	Racking Height	Overall Height	Depth	Weight Capacity
<b>Wall Mount Relay Rack Frames</b>				
RWR-FRM-08U18	8U (14")	18"	18"	200 lbs.
RWR-FRM-12U18	12U (21")	25"	18"	200 lbs.
RWR-FRM-16U18	16U (28")	32"	18"	200 lbs.
RWR-FRM-20U18	20U (35")	39"	18"	200 lbs.
<b>Wall Mount Relay Rack Side Panels</b>				
RWR-SP-08U18	8U		18.5"	
RWR-SP-12U18	12U		18.5"	
RWR-SP-16U18	16U		18.5"	
RWR-SP-20U18	20U		18.5"	
Thin Line Series front doors fit with Wall Mount Series racks; side panels required for installation of front door.				

## Accessories that work on any FatCat rack

### Cable Management Lacer Bars



**R-LCRUBAR-H**

Unique "U" shaped lacer bar (set of 4)



**R-LCRBAR-H**

Standard rear horizontal lacer bar (set of 4)



**R-LCRLBAR-H**

"L" shaped lacer bar (set of 4)



**R-LCRLBAR2-H**

"L" shaped lacer bar w/ 2" indent (set of 4)



**R-LCRLBAR4-H**

"L" shaped lacer bar w/ 4" indent (set of 4)



**R-LCRRBAR-H**

Thin round lacer bar (set of 4)



**R-LCRRBAR2-H**

"R" shaped lacer bar w/ 2" indent (set of 4)



**R-LCRRBAR4-H**

"R" shaped lacer bar w/ 4" indent (set of 4)

### Shelves

	U Space	Depth
<b>Universal</b>		
R-SHELF-1U	1U	-
R-SHELF-2U	2U	-
R-SHELF-3U	3U	-
R-SHELF-4U	4U	-
<b>No-lip</b>		
R-SHELFNL-1U	1U	-
R-SHELFNL-2U	2U	-
R-SHELFNL-3U	3U	-
R-SHELFNL-4U	4U	-
<b>Knockdown</b>		
R-SHELFKD-2U	2U	-
R-SHELFKD-3U	3U	-
R-SHELFKD-4U	4U	-
R-SHELFKD-5U	5U	-
R-SHELFKD-6U	6U	-
<b>4-Point</b>		
RTL-SHELF4P-3U20	3U	20"
RTL-SHELF4P-4U20	4U	20"
RSS-SHELF4P-3U24	3U	24"
RSS-SHELF4P-4U24	4U	24"
RTL-SHELF4P-3U26	3U	26"
RTL-SHELF4P-4U26	4U	26"
<b>Heavy-duty Sliding</b>		
R-SHELFSLD-1U	1U	18-26"



**Universal**  
Standard shelf



**No-lip**  
Standard shelf, but without the front lip



**Heavy-duty Sliding**  
4-point, adjustable depth sliding shelf. 1U with 75 lb. load capacity.



**Knockdown**  
With removable, clip-on side pieces



**4-Point**  
Full-length 4-point mounted shelf for heavy or deep equipment

### Shelf Supports

Two 16-gauge metal supports for handling shelf-mounted equipment with heavy weight requirements. Add up to 90 lbs. of additional weight capacity to shelves they support and include holes for power or cable pass-through.



Shelf supports are also great for stabilizing heavier rack-mounted equipment (amplifiers, media servers, etc.). The shelf supports evenly distribute the weight to alleviate pressure on the front rack rails and equipment ear pieces.



Rack Depth	Shelf Support
18	RSS-SHELFSUP-18
20	RTL-SHELFSUP-20
24	RSS-SHELFSUP-24
26	RTL-SHELFSUP-26

Shelf Height	Weight Supported without Shelf Supports	Weight Supported with Shelf Supports
1U	35 lbs.	125 lbs.
2U	50 lbs.	135 lbs.
3U	70 lbs.	150 lbs.
4U	85 lbs.	165 lbs.
5U	100 lbs.	175 lbs.
6U	100 lbs.	175 lbs.

## Accessories that work on any FatCat rack

### Front Panels



U Space	Blank	Angle-Slotted Vent	Perforated Vent
1U (1.75")	R-BLANK-1U	R-VENTA-1U	R-VENTP-1U
2U (3.5")	R-BLANK-2U	R-VENTA-2U	R-VENTP-2U
3U (5.25")	R-BLANK-3U	R-VENTA-3U	R-VENTP-3U
4U (7.0")	R-BLANK-4U	R-VENTA-4U	R-VENTP-4U

### Fan Panel

4.5" Dual Fan panel, 3U high (5.25"). Includes two fans and guards.

**R-FANPANEL-4.5**



### Lockable Component Drawers

18-gauge component drawer with recessed handle. All drawers now include lock knockout and separate lock/key assembly.

**R-DRAWERL-3U**  
**R-DRAWERL-4U**



### Equipment Trim Panels

Often, shelf-mounted equipment will sit just below the 2U, 3U or 4U height of its shelf, leaving a gap between the equipment and the panel above it. The 0.5U trim panel quickly and cleanly trims this gap. Available in blank or perforated vent panel options.

**R-BLANK-0.5U**  
**R-VENTP-0.5U**



Before



After

### Trim Strip

**NEW**

Inner trim strip to cover screw heads and holes. Easy snap-on design. Black powder-coated aluminum, 44U. Cut to size.

**R-ITRIM**



Before



After

### Rotating Equipment Slide-out Base

16" or 18" deep pull-out base for mounting DVD players, satellite boxes, and other small non-racking equipment in entertainment centers and cabinets.

**R-SLIDEBASE-16**  
**R-SLIDEBASE-18**



- Provides easy access to equipment and cables
- Rotates 60 degrees to the right or left
- Removable front cover locks the base unit into place when not in use
- Weight capacity of 75 lbs.

### Recessed Rail Brackets

2U or 3U metal brackets for mounting of equipment 2" behind standard front railings. Perfect for installations requiring cable patch panels, networking hubs, or camera switches that need to fit inside the front door.

**R-RAILRECESS-2U** **NEW**  
**R-RAILRECESS-3U**



Creates additional 2" gap between equipment and front door

## Audio Cables

Audio Stereo - 3', 6', 10', 16'  
Digital Audio - 3', 6', 10'  
Toslink Optical - 3', 6', 10', 16'  
Subwoofer - 6', 12', 18', 25'

## Video Cables

HDMI - 3', 6', 10', 16', 25'  
Component Video - 3', 6', 10', 16', 25'  
Audio/Video - 3', 6', 10', 16'  
Composite Video - 3', 6', 10', 16'  
S-Video - 3', 6', 10'

## Adapters

MP3 Adapter - 3', 6'  
1M-2F Y-Adapter - 8"  
1F-2M Y-Adapter - 8"



## PREFERRED 200 SERIES

**Sturdy, high-performance cables at a great price**

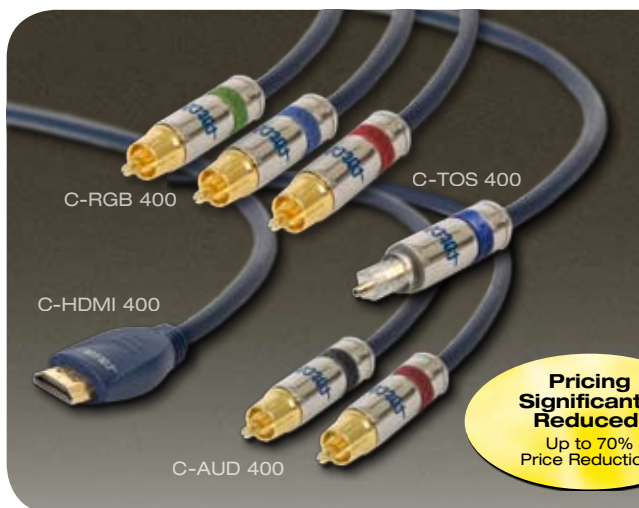
But don't let the price point fool you – these cables are loaded with high-end features to ensure that the sound is as sweet as the price.

These features include:

- Nitrogen-injected foamed PE dielectric
- Tightly woven OFC copper braid
- Flexible black matte PVC jacket
- 24k gold-plated contacts
- Unique double-molded connectors with streamlined non-slip grip

**Pricing  
Significantly  
Reduced!**

Now priced below our previous 100 Series pricing.



## SELECT 400 SERIES

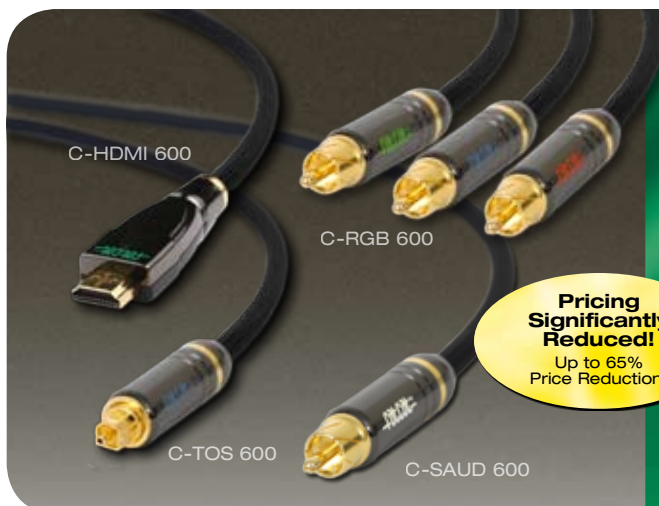
**Dependable, high-quality cables that deliver superb impact and clean sound**

We've added gold tips, greater shielding, and a better dielectric to our current line-up – without messing with the price points.

Upgraded features include:

- Multi-strand 99.99% pure oxygen-free copper (PC-OFC) center conductors
- Nitrogen-injected high-density foamed PE dielectric
- Triple-shielded design with two layers of 100% Mylar foil plus 75% braided OFC copper
- Flexible dark blue PVC jacket
- Split center pin, 6-cut 24k gold-plated contacts
- Precision-machined RCA metal connectors

**Pricing  
Significantly  
Reduced!**  
Up to 70%  
Price Reduction!



## ELITE 600 SERIES

**Superior-constructed audiophile cables for the most demanding applications**

And with premium metal connectors and nylon sleeves, these cables not only sound amazing, but look amazing too.

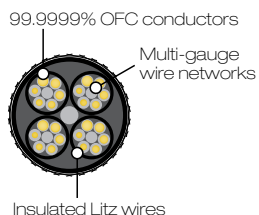
The Elite 600 Series cables boast the following features:

- Solid-core silver plated (SPC) oxygen-free copper conductors
- Nitrogen-injected high-density foamed PE dielectric
- Triple-shielded design with two layers of 100% Mylar foil plus 95% high-density OFC copper braid
- Flexible dark blue PVC jacket plus black nylon braid
- Split center pin, 6-cut 24k gold-plated contacts with angled incisions
- Precision-machined premium RCA metal connectors

**Pricing  
Significantly  
Reduced!**  
Up to 65%  
Price Reduction!

## ELITE 600 SERIES

### Premium, advanced-performance audiophile speaker cables



- Superior, low-resistant 50μ silver-plated contacts significantly reduce signal attenuation
- 99.9999% oxygen-free copper (OFC) conductors
- Multi-gauge wire networks effectively transmit high and low frequencies for outstanding audio signal transmission
- Insulated Litz wires reduce interference and mitigate "skin-effect" loss, providing a clear sound every time
- Polished metal SR modules reduce cable tension
- Sleek nylon sleeves provide 100% jacket protection



#### 2-Conductor Speaker Cable

- 12AWG conductors
- Pair of connectors (+ and -) at amp side, pair of connectors (+ and -) at speaker side
- Used to deliver premium sound to a cabinet (bookshelf, floor-standing, etc.) speaker

#### 4-Conductor "Shotgun" Speaker Cable

- Combined 7AWG cable construction
- 2 connectors at each end (combined + and - conductors)
- Used to drive additional sound and more power. Makes an excellent passive sub cable

#### 4-Conductor "Bi-Wire" Speaker Cable

- Pair of connectors (combined + and - conductors) at amp side, two pairs of connectors at speaker side
- Used for connecting to a two-way speaker with separate binding posts, normally configured as mid and hi on top and woofer at the bottom

#### 4-Conductor "Bi-Ampable" Cable

- Two pairs of + and - connectors on both cable ends
- Used when connecting two amplifiers for professional sound or sound reinforcement applications

## PREFERRED 200 SERIES

### Attractive, high-performance speaker cables at a great price



- Full-range cable for terrific bass and high-frequency reproduction
- 99.99% oxygen-free copper (OFC) conductors
- Multi-layered shielding construction to ensure superior noise rejection
- Riveted contacting tips and non-soldered connectors lower contact impedance
- Sleek, flexible tube design
- 24k gold contacts
- Comes with Banana or Spade tips

## Taking *HD* the distance



C-HDMI

### C-HDMI-PD

Premium HDMI Cable

40 ft, 50 ft, 75 ft

- Perfect for 1080p HD applications with longer HDMI requirements
- HDMI 1.3a compliant without amplifiers or boosters
- Heavy gauge, silver-plated conductors for optimum signal transfer
- Precision cut all-metal connectors
- CL3 rated for in-wall use



E-AV-RDR

E-AV-RDT

### A/V Cat-5/6 Extenders

Distribute high definition component video, digital audio, and stereo audio signals over Cat-5 or Cat-6 cable to multiple rooms at distances up to 300 feet.

**New updated design installs flat on the wall**

### E-AV-RDT

A/V Cat-5/6 Extender Transmitter

- Features RJ45 jacks for easy and secure termination of Cat-5/6 cable
- Cat-5/6 outputs for standard support of two locations
- Support for additional transmitters and receivers
- Active amplification for best transmission quality

### E-AV-RDR

A/V Cat-5/6 Extender Receiver

- Features RJ45 jacks for easy and secure termination of Cat-5/6 cable
- Cable length equalizer for optimal picture results
- LED lights to ensure continuity of all video signals



E-HDMI-RDT/R

### HDMI Cat-5/6 Extender

Distribute high definition 1080p HDMI signal over Cat-5 cable at distances up to 196 feet.

### E-HDMI-RDT/R

HDMI Cat-5/6 Extender Transmitter/Receiver pair

- Plug-and-play, installs in seconds
- HDMI 1.3b compatible
- New, updated PCB design
- Easy mounting, removable side pieces
- Now powered at the sender instead of the receiver
- Metal shell effectively screens EMI (electro-magnetic) and RFI (radio frequency) interference

## CUSTOM FACE PLATES

### Custom Face Plates

Custom Face Plates are designed to provide professional installation of virtually any non-rackmount component. Each face plate is custom cut according to your specifications, creating a finished look for the component you are mounting.

#### FatCat Custom Face Plates:

- Support equipment up to 17-1/4" wide, 10-3/8" (6U) tall, and 15-1/4" deep (equipment deeper than 15-1/4" to the rear feet require a 4-point shelf)
- Can be used with our universal shelves, knockdown shelves, no-lip shelves, or 4-point-mounted shelves
- Include a 3-5 day turnaround time
- Can be purchased as face plates only, or in discounted shelf bundles
- Feature a durable powder-coat finish to match the rack frame



2U face plate on a universal shelf



5U face plate on a knockdown shelf

## PRE-CONFIGURED (NOT PRE-ASSEMBLED) RACK BUNDLES

Simplify configuration and ordering with our new discounted Rack Bundles. Save time and money by ordering your rack frame and most common accessories with one simple part number.



#### Small Bundle RTL-BNDL(S)-16U

Thin Line Series 16U, 20-inch deep rack frame  
(3) 2U Shelves  
(3) 2U Vented Panels  
(4) Lacer Bars  
(1) Bottle of 100 Screws

#### Medium Bundle RSS-BNDL(M)-28U

Stealth Series 28U, 24-inch deep rack frame  
(4) 2U Shelves  
(1) 4U Shelf  
(5) 2U Vented Panels  
(4) Lacer Bars  
(1) Set of 4 Casters and Caster Cover  
(1) Bottle of 100 Screws



#### Large Bundle RSS-BNDL(L)-44U

Stealth Series 44U, 24-inch deep rack frame w/2 fans  
(5) 2U Shelves  
(2) 3U Shelves  
(1) 4U Shelf  
(3) 1U Vented Panels  
(5) 2U Vented Panels  
(8) Lacer Bars  
(1) Heavy-duty Casterbase  
(1) Bottle of 100 Screws



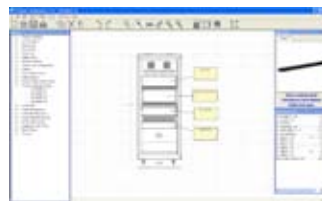
**Note:** Bundle discounts apply only to the configurations as listed above. Individual items may not be traded, added to, or removed at the discounted price.

## GRAPHICAL RACK CONFIGURATOR

Configure your racks electronically before you order. Print off templates to show your customers as you present your bid. Save configurations for future reference. It's all there in our new **FatCat A/V Rack Configurator** software.



Step-by-step configuration wizard for beginning users



Measuring and labeling capabilities



Front, side, and rear views



Complete quote forms that can be printed or emailed for easy ordering